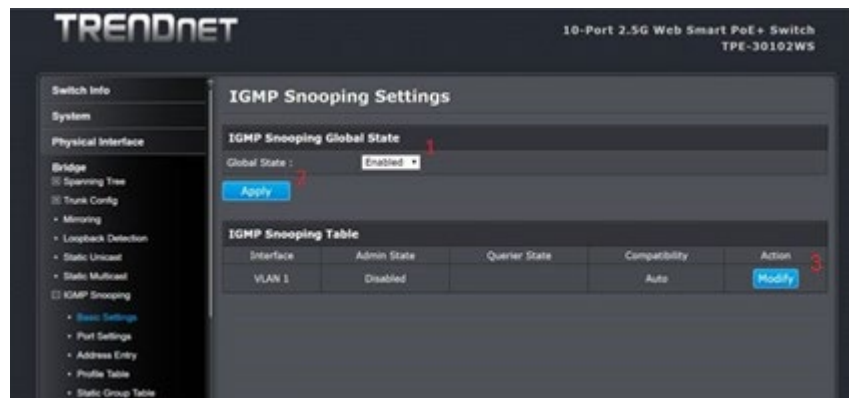




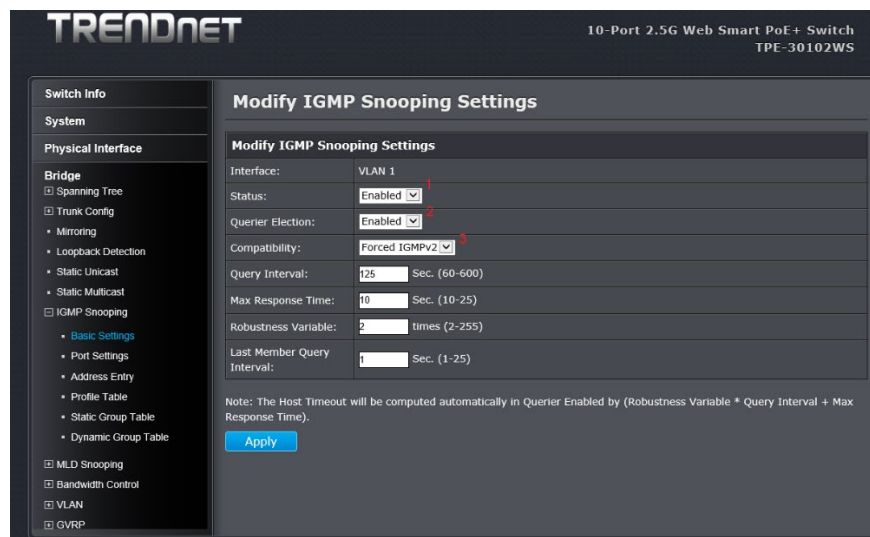
TRENDnet Configuration

The EVO-IP HDMI over IP System has been tested and confirmed to work with Trendnet TPE series ethernet switches. Below are screenshots showing the configuration needed to get the EVO-IP system up and running. Please refer to TRENDnet's manual and instructions on how to access the settings.

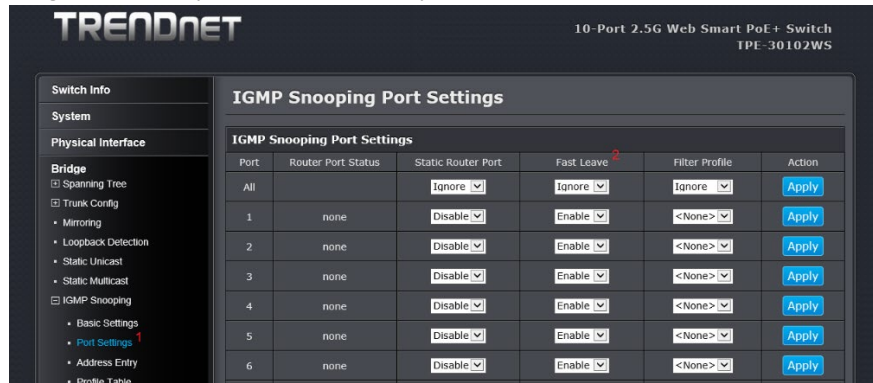
1. Enable **IGMP Snooping** by going to: **Bridge->IGMP Snooping->Basic Settings**. Enable the setting in the **Global State** dropdown menu, then click **Apply**.
2. Next click on **MODIFY** under the **IGMP Snooping Table** heading.



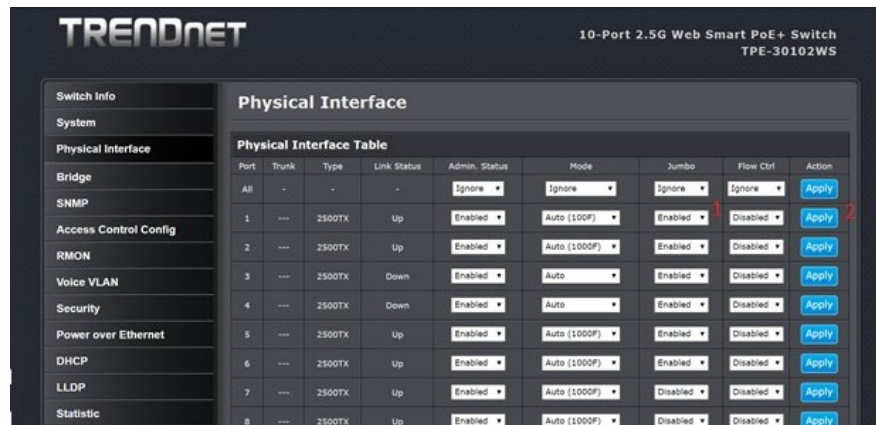
3. Under the **Modify IGMP Snooping Settings**, click on the dropdown menus for **Status** and **Querier Election** and enable both settings. Then click on the dropdown menu for **Compatibility** and select **Forced IGMPv2**. Once all settings are done click **Apply**.



4. Next go to **Port Settings**, click on the dropdown menu for **Fast Leave**, then select **Enable** and click **Apply**. This can be done for individual ports using the EVO-IP products or for ALL ports on the switch.



5. Enable **Jumbo Frames** by clicking on the **Physical Interface** sub menu. Within the table under the column labeled **Jumbo**, click on the dropdown menu that applies for each port being used and select **Enabled**, then click **Apply**.



6. To make sure ALL settings are saved, select **Save Settings to Flash** from the left-hand column, then click on the **Save Settings to Flash** button. This will save the settings to the switch in the event the switch loses power or is power cycled.

